



**Amarillo
Gear
Company
LLC**

Post Office Box 1789
Amarillo, Texas 79105
2401 Sundown Lane (79118)
Ph. 806 622 1273
Fax 806 622 3258

Revision date 02/01/11

Instructions for Using Current Production Parts Price List for Small Pump Drives

1. These parts lists are for current production models from the model 20 to the model 350.
Contact Amarillo Gear Company for part prices for larger models, heavy thrust models, and special rotation gear drives.
2. To make sure you get the correct parts, always provide the serial number of the gear drive when ordering parts.
3. General drawing for pump drives and combination assemblies are provided for parts identification.
4. Prices are subject to change without notice.

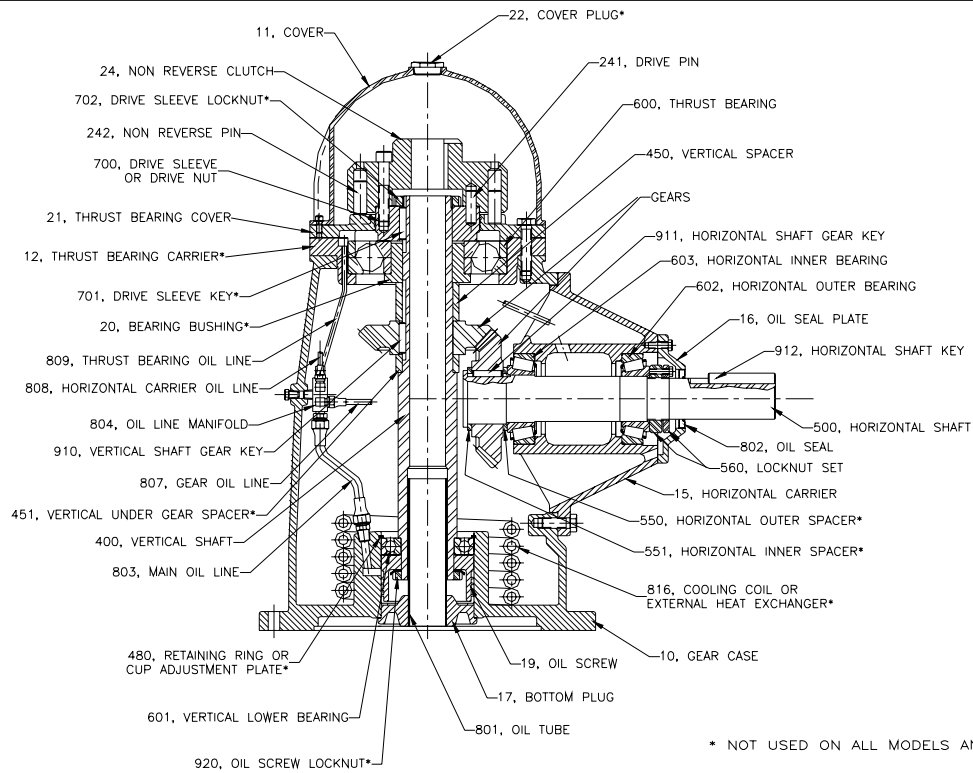
PPC 09/09



A member of The Marmon Group of companies

Copyright ©2003 Amarillo Gear Co.

PPC 11/08



* NOT USED ON ALL MODELS AND RATIOS

DR.BY: R. ADAMS
 CK.BY:
 APP.BY:

**AMARILLO
 GEAR
 COMPANY**

TYPICAL
 CROSS
 SECTION

MODEL:	20-350
DATE:	11/4/02
PART NO.	
DWG NO.	A5019



Post Office Box 1789
 Amarillo, Texas 79105
 2401 Sundown Lane (79118)
 Ph. 806 622 1273
 Fax 806 622 3258

Prices effective 02/01/2011. Subject to Change without Notice

Model 20 and 30 Parts Price List						
STANDARD DRIVE, TYPE S OR SL, FIGURE 1 ROTATION						
Ref. No.	Model 20	Model 30	Part No.	Description	Price	
10	X	X	S10C	Gear Case	478.00	
11	X	X	S11S	Cover	45.70	
12	X	X		Not available on this model		
15	X	X	S15T	Horizontal Carrier	165.00	
15	X	X	S15TS	Short Horizontal Carrier, 4:3 & 3:2 Ratios	388.00	
16	X	X	S16T	Oil Seal Plate	28.80	
17	X	X	S17FW	Bottom Plug With Oil Tube	59.10	
	X	X	S18	Inspection Plate (Not Shown)	31.10	
19	X	X	S19F	Oil Screw	49.90	
20		X	1331	Bearing Bushing, Light Thrust	316.00	
21	X	X	S21RD	Thrust Bearing Cover	61.70	
22	X	X		Not available on this model		
24	X	X	S24R	Non Reverse Clutch	142.00	
241	X	X		Drive Pins, Set of 2	2.10	
242	X	X	NR 20	Non Reverse Pins, Set of 4	4.40	
400	X	X		Vertical Shaft, Standard & Light Thrust, Drive Sleeve	265.00	
400	X	X		Vertical Shaft, Standard & Light Thrust, Drive Nut	287.00	
450	X	X		Vertical Spacer	17.80	
451	X	X		Vertical Under Gear Spacer	18.40	
480	X	X	3000-312	Retaining Ring	5.90	
500	X	X		Horizontal Shaft 1:1, 6:5, & Increasing Ratios	82.80	
500	X	X		Horizontal Shaft, 3:2 & 4:3 Ratios	280.00	
550	X	X		Horizontal Outer Spacer	18.40	
551	X	X		Horizontal Inner Spacer	18.40	
560	X	X	1231	Locknut Set	34.60	
600	X	X	7407BG	Thrust Bearing	173.00	
600	X		6407	Thrust Bearing, Light Thrust	83.60	
600		X	QJ309	Thrust Bearing, Light Thrust	188.00	
601	X	X	6208	Vertical Lower Bearing	29.70	
602	X	X	25821/77	Horizontal Outer Bearing	29.90	
603	X	X	25821/77	Horizontal Inner Bearing	29.90	
700	X	X	1168	Drive Nut, Obsolete	128.00	
700	X	X	1358	Drive Sleeve, Current Design	101.00	
701	X	X		Not available on this model		
702	X	X		Not available on this model		
801	X	X	1237	Oil Tube (Order with Bottom Plug)	18.80	
802	X	X	12456	Oil Seal	7.50	
803	X	X		Main Oil Line	8.30	
804	X	X	S 25	Oil Line Manifold	33.90	
804	X	X	E25W	Oil Line Manifold with Fittings	34.70	
807	X	X		Gear Oil Line	4.50	
808	X	X		Horizontal Carrier Oil Line	4.50	
809	X	X		Thrust Bearing Oil Line	4.50	
816	X	X		Not available on this model		
825	X	X	G 20	Set of Gear Case Gaskets (below S/N 231989)	6.20	
	X	X	51531	Loctite Gasket Sealant 50ml tube (S/N 231989 & above)	30.50	
910	X	X	MK1	Vertical Shaft Gear Key	1.80	
911	X	X	MK1	Horizontal Shaft Gear Key	1.80	
912	X	X	MK2	Horizontal Shaft Key	1.14	
920	X	X		Not available on this model	0.00	
	X	X		Labor, Oil, & Paint; Repair or Ratio Changes, Net	447.00	

Gear Set Prices: Gear Sets Sold in Sets Only

Increasing Ratios

Model	1:1	5:6	3:4	2:3	4:7	1:2	
20 & 30	370.00	544.00	759.00	512.00	684.00	569.00	

Decreasing Ratios

Model	6:5	4:3	3:2	2:1			
20 & 30	544.00	759.00	512.00	569.00			

FOR HEAVY THRUST (SH) OR SPECIAL ROTATION PARTS, CONTACT FACTORY.
 MINIMUM ORDER VALUE - \$100.00 NET.

SOME PART NUMBERS DETERMINED BY RATIO AND/OR OPTIONAL FEATURES. ALWAYS
 PROVIDE SERIAL NUMBER OF DRIVE WHEN ORDERING PARTS FOR VERIFICATION.



Prices effective 02/01/2011. Subject to Change without Notice

Model 40 Parts Price List			
STANDARD DRIVE, TYPE S OR SL, FIGURE 1 ROTATION			
Ref. No.	Part No.	Description	Price
10	J10F	Gear Case, 12" BD	863.00
10	J10FX	Gear Case, 16-1/2" BD	863.00
11	J11A	Cover	103.00
12	J12B1	Thrust Bearing Carrier	189.00
15	J15D	Horizontal Carrier	287.00
15	J15DS	Short Horizontal Carrier, 4:3, 3:2, 7:4, 2:1 & 3:1 Ratios	400.00
16	J16A	Oil Seal Plate	53.50
17	J17EW	Bottom Plug With Oil Tube	67.00
	E18	Inspection Plate (Not Shown)	19.20
19	J19E	Oil Screw	64.40
20	J20	Thrust Bearing Bushing	67.40
21	J21RB	Thrust Bearing Cover	67.50
22		Not available on this model	
24	J24R	Non Reverse Clutch	164.00
241		Drive Pins, Set of 2	2.40
242	NR 40	Non Reverse Pins, Set of 4	4.80
400		Vertical Shaft, Standard & Light Thrust, Drive Sleeve	300.00
400		Vertical Shaft, Standard & Light Thrust, Drive Nut	381.00
450		Vertical Spacer	19.20
451		Vertical Under Gear Spacer	21.30
480	3000-393	Retaining Ring	7.60
500	2258	Horizontal Shaft	130.00
550		Horizontal Outer Spacer	21.30
551		Horizontal Inner Spacer	21.30
560	2230	Locknut Set	35.70
600	6312	Thrust Bearing, Light Thrust	114.00
600	7312BG	Thrust Bearing, Standard Thrust	165.00
601	6211	Vertical Lower Bearing	51.60
602	M802011/48	Horizontal Outer Bearing	28.50
603	M802011/48	Horizontal Inner Bearing	28.50
700	2124	Drive Nut, Obsolete	210.00
700	2381	Drive Sleeve, Current Design	106.00
701		Not available on this model	
702		Not available on this model	
801	7075-2	Oil Tube (Order with Bottom Plug)	19.90
802	15141	Oil Seal	8.40
803		Main Oil Line	8.30
804	S 25	Oil Line Manifold	33.90
804	E25W	Oil Line Manifold with Fittings	34.70
807		Gear Oil Line	4.50
808		Horizontal Carrier Oil Line	4.50
809		Thrust Bearing Oil Line	4.50
816	2255	Cooling Coil	82.20
825	GC 40	Complete Set of Gaskets (below S/N 231989)	14.40
	51531	Loctite Gasket Sealant 50ml tube (S/N 231989 and above)	30.50
910	MK3	Vertical Shaft Gear Key	1.80
911	MK3	Horizontal Shaft Gear Key	1.80
912	MK10	Horizontal Shaft Key	1.80
920		Not available on this model	
	P1030-4	Oil Sight Glass	12.30
		Labor, Oil, & Paint; Repair or Ratio Changes, Net	546.70

Gear Set Prices: Gear Sets Sold in Sets Only

Increasing Ratios

Model	1:1	5:6	3:4	2:3	4:7	1:2
40	408.00	544.00	750.00	613.00	738.00	581.00

Decreasing Ratios

Model	6:5	4:3	3:2	7:4	2:1
40	544.00	750.00	613.00	738.00	581.00

FOR HEAVY THRUST (SH) OR SPECIAL ROTATION PARTS, CONTACT FACTORY.
MINIMUM ORDER VALUE - \$100.00 NET.

SOME PART NUMBERS DETERMINED BY RATIO AND/OR OPTIONAL FEATURES. ALWAYS
PROVIDE SERIAL NUMBER OF DRIVE WHEN ORDERING PARTS FOR VERIFICATION.



Post Office Box 1789
 Amarillo, Texas 79105
 2401 Sundown Lane (79118)
 Ph. 806 622 1273
 Fax 806 622 3258

Prices effective 02/01/2011. Subject to Change without Notice

Model 60A and 80A Parts Price List					
STANDARD DRIVE, TYPE S OR SL, FIGURE 1 ROTATION					
Ref. No.	Model 60A	Model 80A	Part No.	Description	Price
10	X	X	P10D	Gear Case	1092.00
11	X	X	P11B	Cover	148.00
12	X		P12	Thrust Bearing Carrier	218.00
12		X	P12AR	Thrust Bearing Carrier	218.00
12	X		P12AR	Thrust Bearing Carrier, Light Thrust	218.00
12		X	P12SR	Thrust Bearing Carrier, Light Thrust	378.00
15	X		P13TA	Horizontal Carrier	312.00
15	X		P13TS	Short Horizontal Carrier, 8:5, 2:1, & 3:1 Ratios	501.00
15		X	P14TA	Horizontal Carrier	312.00
15		X	P14TS	Short Horizontal Carrier, 5:2, 2:1, & 3:1 Ratios	501.00
16	X		P16D	Oil Seal Plate	54.20
16		X	P16TFS	Oil Seal Plate	55.30
17	X	X	P17EW	Bottom Plug With Oil Tube	67.80
	X	X	E18	Inspection Plate (Not Shown)	19.20
19	X	X	P19E	Oil Screw	62.60
20		X		Not available on this model	
21	X		P21RDH	Thrust Bearing Cover	110.00
21		X	P21RBH	Thrust Bearing Cover	126.00
21	X		P21RBH	Thrust Bearing Cover, Light Thrust	126.00
21		X	P21RDH	Thrust Bearing Cover, Light Thrust	110.00
22	X	X	E22	Cover Plug	11.80
24	X	X	P24R-1	Non Reverse Clutch	167.00
241	X	X		Drive Pins, Set of 2	5.40
242	X	X	NR60 or NR80	Non Reverse Pins, Set of 4	10.90
400		X	3765-1	Vertical Shaft, Standard Thrust	287.00
400	X	X		Vertical Shaft, Light Thrust	287.00
450	X	X		Vertical Spacer	20.70
451	X	X		Vertical Under Gear Spacer	17.90
480	X	X	3000-433	Retaining Ring	8.60
500	X		3391	Horizontal Shaft	139.00
500		X	3392	Horizontal Shaft	139.00
500	X	X		Horizontal Shaft, 8:5, 7:4, 2:1, & 3:1 Ratios	613.00
550	X	X		Horizontal Outer Spacer	17.90
551	X	X		Horizontal Inner Spacer	17.90
560	X		2230	Locknut Set	35.70
560		X	3268	Locknut Set	52.50
600	X		7312	Thrust Bearing	165.00
600		X	7412	Thrust Bearing	413.00
600	X		6412	Thrust Bearing, Light Thrust	391.00
600		X	2-7312	Thrust Bearing, Light Thrust	330.00
601	X	X	6212	Vertical Lower Bearing	59.90
602	X		HM804810/40	Horizontal Outer Bearing	92.20
602		X	JHM807012/45	Horizontal Outer Bearing	81.30
603	X		HM804810/48	Horizontal Inner Bearing	59.30
603		X	HM807010/46	Horizontal Inner Bearing	67.90
700	X	X	3841	Drive Sleeve	86.70
701	X	X	MK5	Drive Sleeve Key	1.60
702	X	X	N-11	Drive Sleeve Locknut	10.00
801	X	X	7075-3	Oil Tube (Order with Bottom Plug)	21.60
802	X		15141	Oil Seal	8.40
802		X	18733	Oil Seal	12.00
803	X	X		Main Oil Line	8.30
804	X	X	S 25	Oil Line Manifold	33.90
804	X	X	E25W	Oil Line Manifold with Fittings	34.70
807	X	X		Gear Oil Line	4.50
808	X	X		Horizontal Carrier Oil Line	4.50
809	X	X		Thrust Bearing Oil Line	4.50
816	X	X	3353	Cooling Coil	119.00
825	X	X	GC 60 or GC 80	Complete Set of Gaskets (below S/N 231989)	14.00
	X	X	51531	Loctite Gasket Sealant 50ml tube (S/N 231989 and up)	30.50
910	X	X	MK5	Vertical Shaft Gear Key	1.60
911	X	X	MK5	Horizontal Shaft Gear Key	1.60
912	X	X	MK10	Horizontal Shaft Gear Key	1.80
920				Not available on this model	
	X	X	401100	CR v seal for S60A thru S125A	21.60
	X			Labor, Oil & Paint; Repair or Ratio Changes, Net	615.00
		X		Labor, Oil & Paint; Repair or Ratio Changes, Net	673.00

Gear Set Prices: Gear Sets Sold in Sets Only

Increasing Ratios

Model	1:1	10:11	5:6	4:5	3:4	2:3	4:7	1:2
60A & 80A	452.00	573.00	573.00	695.00	844.00	600.00	896.00	853.00

Decreasing Ratios

Model	11:10	6:5	5:4	4:3	3:2	8:5	2:1	3:1
60A & 80A	573.00	573.00	573.00	573.00	600.00	1140.00	1090.00	1260.00

11:10
 551.00

FOR HEAVY THRUST (SH) OR SPECIAL ROTATION PARTS, CONTACT FACTORY.
 MINIMUM ORDER VALUE - \$100.00 NET.

SOME PART NUMBERS DETERMINED BY RATIO AND/OR OPTIONAL FEATURES. ALWAYS PROVIDE
 SERIAL NUMBER OF DRIVE WHEN ORDERING PARTS FOR VERIFICATION.



Post Office Box 1789
 Amarillo, Texas 79105
 2401 Sundown Lane (79118)
 Ph. 806 622 1273
 Fax 806 622 3258

Prices effective 02/01/2011. Subject to Change without Notice

Model 100A and 125A Parts Price List						
STANDARD DRIVE, TYPE S OR SL, FIGURE 1 ROTATION						
Ref. No.	Model 100A	Model 125A	Part No.	Description	Price	
10	X	X	P10D	Gear Case	1092.00	
11	X	X	P11B	Cover	148.00	
12	X		P12AR	Thrust Bearing Carrier	218.00	
12		X	P12SR	Thrust Bearing Carrier	378.00	
12	X	X	P12SR	Thrust Bearing Carrier, Light Thrust	378.00	
15	X		P14TA	Horizontal Carrier	312.00	
15	X		P14TS	Short Horizontal Carrier, 5:2, 2:1, & 3:1 Ratios	501.00	
15		X	P15TA	Horizontal Carrier	363.00	
16	X	X	P16TFS	Oil Seal Plate	55.30	
17	X	X	P17EW	Bottom Plug With Oil Tube	67.80	
	X	X	E18	Inspection Plate (Not Shown)	19.20	
19	X	X	P19E	Oil Screw	62.60	
20				Not available on this model		
21	X		P21RBH	Thrust Bearing Cover	126.00	
21		X	P21RDH	Thrust Bearing Cover	110.00	
21	X	X	P21RDH	Thrust Bearing Cover, Light Thrust	110.00	
22	X	X	E22	Cover Plug	11.80	
24	X	X	P24R-1	Non Reverse Clutch	167.00	
241	X	X		Drive Pins, Set of 2	5.40	
242	X	X	NR 100	Non Reverse Pins, Set of 4	10.90	
400	X		3765-1	Vertical Shaft, Standard Thrust	287.00	
400		X	3765-4	Vertical Shaft, Standard Thrust	287.00	
400	X	X	3765-4	Vertical Shaft, Light Thrust	287.00	
450	X	X		Vertical Spacer	20.70	
451	X	X		Vertical Under Gear Spacer	17.90	
480	X	X	3000-433	Retaining Ring	8.60	
500	X		3392	Horizontal Shaft	139.00	
500		X	3267	Horizontal Shaft	139.00	
500	X			Horizontal Shaft, 5:2, 2:1, & 3:1 Ratios	613.00	
550	X	X		Horizontal Outer Spacer	17.90	
551	X	X		Horizontal Inner Spacer	17.90	
560	X	X	3268	Locknut Set	52.50	
600	X		7412BG	Thrust Bearing	413.00	
600		X	2-7312	Thrust Bearing	331.00	
600	X	X	2-7312	Thrust Bearing, Light Thrust	331.00	
601	X	X	6212	Vertical Lower Bearing	59.90	
602	X		JHM807012/45	Horizontal Outer Bearing	81.30	
602		X	HM807010/46	Horizontal Outer Bearing	67.90	
603	X		HM807010/46	Horizontal Inner Bearing	67.90	
603		X	5535/5566	Horizontal Inner Bearing	251.60	
700	X	X	3841	Drive Sleeve	86.70	
701	X	X	MK5	Drive Sleeve Key	1.60	
702	X	X	N-11	Drive Sleeve Locknut	10.00	
801	X	X	7075-3	Oil Tube (Order with Bottom Plug)	21.60	
802	X	X	18733	Oil Seal	12.00	
803	X	X		Main Oil Line	8.30	
804	X	X	S 25	Oil Line Manifold	33.90	
804	X	X	E25W	Oil Line Manifold with Fittings	34.70	
807	X	X		Gear Oil Line	4.50	
808	X	X		Horizontal Carrier Oil Line	4.50	
809	X	X		Thrust Bearing Oil Line	4.50	
816	X	X	3353	Cooling Coil	119.00	
825	X	X	GC 100 or GC 125A	Complete Set of Gaskets (below S/N 231989)	14.00	
	X	X	51531	Loctite Gasket Sealant 50ml tube (S/N 231989 & above)	30.50	
910	X	X	MK5	Vertical Shaft Gear Key	1.60	
911	X	X	MK5	Horizontal Shaft Gear Key	1.60	
912	X	X	MK10	Horizontal Shaft Key	1.80	
920				Not available on this model		
	X	X	401100	CR v seal for S60A thru S125A	21.60	
	X	X	P1030-4	Oil Sight Glass	12.30	
	X			Labor, Oil & Paint; Repair or Ratio Changes, Net	673.20	
		X		Labor, Oil & Paint; Repair or Ratio Changes, Net	710.60	

Gear Set Prices: Gear Sets Sold in Sets Only

Increasing Ratios

Model	1:1	10:11	5:6	4:5	3:4	2:3	5:8	4:7	1:2	2:5
100A	538.00	573.00	573.00	695.00	887.00	759.00	1140.00	896.00	853.00	1600.00
125A	538.00	573.00	573.00	695.00	887.00	759.00		896.00	853.00	

Decreasing Ratios

Model	11:10	6:5	5:4	4:3	3:2	7:4	2:1
100A	573.00	573.00	573.00	573.00	600.00	1190.00	1090.00
125A	573.00	573.00	573.00	573.00	600.00		

11:10	6:5
551.00	551.00
551.00	551.00

FOR HEAVY THRUST (SH) OR SPECIAL ROTATION PARTS, CONTACT FACTORY.
 MINIMUM ORDER VALUE - \$100.00 NET.

SOME PART NUMBERS DETERMINED BY RATIO AND/OR OPTIONAL FEATURES. ALWAYS PROVIDE
 SERIAL NUMBER OF DRIVE WHEN ORDERING PARTS FOR VERIFICATION.



Post Office Box 1789
 Amarillo, Texas 79105
 2401 Sundown Lane (79118)
 Ph. 806 622 1273
 Fax 806 622 3258

Prices effective 02/01/2011. Subject to Change without Notice

Model 200A Parts Price List			
STANDARD DRIVE, TYPE S OR SL, FIGURE 1 ROTATION			
Ref. No.	Part No.	Description	Price
10	M10F	Gear Case	1500.00
11	M11B	Cover	155.00
12	M12	Thrust Bearing Carrier, Standard or Light Thrust	314.00
15	M13TF	Horizontal Carrier, Speed Increasing, 1:1 & 11:10 Ratios	654.00
15	M13STF	Horizontal Carrier, Speed Decreasing, Except 11:10 Ratio	654.00
16	M16B	Oil Seal Plate	84.60
17	M17BW	Bottom Plug With Oil Tube	75.90
	E18	Inspection Plate (Not Shown)	19.20
19	M19B	Oil Screw	91.20
20		Not available on this model	
21	M21RDH	Thrust Bearing Cover, Standard or Light Thrust	253.00
22	E22	Cover Plug	11.80
24	M24R-1	Non Reverse Clutch	379.00
241		Drive Pins, Set of 2	7.50
242	NR 200	Non Reverse Pins, Set of 4	33.10
400	5853	Vertical Shaft, Standard or Light Thrust	496.00
450		Vertical Spacer	36.30
451		Vertical Under Gear Spacer	26.10
480	3000-550	Retaining Ring	30.90
500	5262	Horizontal Shaft, Increasing, 1:1, & 11:10 Ratios	260.00
500	5261	Horizontal Shaft, Decreasing	260.00
500	5383	Horizontal Shaft, 8:5 Ratio	545.00
500	5813	Horizontal Shaft, 7:4 Ratio	739.00
500	5345	Horizontal Shaft, 5:2 Ratio	545.00
500	5265	Horizontal Shaft, 2:1 Ratio	573.00
500	5339	Horizontal Shaft, 3:1 Ratio	617.00
550		Horizontal Outer Spacer	26.60
551		Horizontal Inner Spacer	26.60
560	5237	Locknut Set	77.60
600	2-7315BG	Thrust Bearing, Standard or Light Thrust	710.00
601	6216	Vertical Lower Bearing	120.00
602	632/642	Horizontal Outer Bearing	236.80
603	H414210/49	Horizontal Inner Bearing	128.10
700	5411	Drive Sleeve	165.00
701	MK6	Drive Sleeve Key	1.80
702	AN-15	Drive Sleeve Locknut	24.90
801	7075-4	Oil Tube (Order with Bottom Plug)	28.70
802	24370	Oil Seal	19.00
803		Main Oil Line	8.30
804	S 25	Oil Line Manifold	33.90
804	E25W	Oil Line Manifold with Fittings	34.70
807		Gear Oil Line	4.50
808		Horizontal Carrier Oil Line	4.50
809		Thrust Bearing Oil Line	4.50
816	5377	Cooling Coil	198.00
825	GC 200	Complete set of Gaskets (below S/N 231989)	18.60
	51531	Loctite Gasket Sealant 50ml tube (S/N 231989 & above)	30.50
910	MK6	Vertical Shaft Gear Key	1.80
911	MK6	Horizontal Shaft Gear Key	1.80
912	MK15	Horizontal Shaft Key	5.60
920		Not available on this model	
	P1030-4	Oil Sight Glass	12.30
		Labor, Oil & Paint; Repair or Ratio Changes, Net	827.20

Gear Set Prices: Gear Sets Sold in Sets Only

Increasing Ratios

Model	1:1	10:11	5:6	4:5	3:4	2:3	4:7	1:2	4:9	2:5	1:3
200A	823.00	1020.00	1240.00	1240.00	1300.00	1240.00	1880.00	1890.00	2530.00	2010.00	2360.00

Decreasing Ratios

Model	11:10	6:5	5:4	4:3	3:2	7:4	2:1	5:2	3:1
200A	1020.00	1240.00	1240.00	1240.00	1240.00	1620.00	1620.00	1930.00	1880.00

FOR HEAVY THRUST (SH) OR SPECIAL ROTATION PARTS, CONTACT FACTORY.
 MINIMUM ORDER VALUE - \$100.00 NET.

SOME PART NUMBERS DETERMINED BY RATIO AND/OR OPTIONAL FEATURES. ALWAYS
 PROVIDE SERIAL NUMBER OF DRIVE WHEN ORDERING PARTS FOR VERIFICATION.



Post Office Box 1789
 Amarillo, Texas 79105
 2401 Sundown Lane (79118)
 Ph. 806 622 1273
 Fax 806 622 3258

Prices effective 02/01/2011. Subject to Change without Notice

Model 150A Parts Price List			
STANDARD DRIVE, TYPE S OR SL, FIGURE 1 ROTATION			
Ref. No.	Part No.	Description	Price
10	P10M	Gear Case	1092.00
11	P11B	Cover	148.00
12	P12S2M	Thrust Bearing Carrier, Standard or Light Thrust	410.00
15	P15M	Horizontal Carrier	463.00
15	P15MS	Short Horizontal Carrier, 7:4, 2:1 & 5:2 Ratios	544.00
16	M16B	Oil Seal Plate	84.60
17	P17MW	Bottom Plug With Oil Tube	79.90
	E18	Inspection Plate (Not Shown)	19.20
19	P19M	Oil Screw	99.80
20		Not available on this model	
21	P21RMH	Thrust Bearing Cover, Standard or Light Thrust	202.00
22	E22	Cover Plug	11.80
24	P24RM	Non Reverse Clutch	246.00
241		Drive Pins, Set of 2	5.40
242	NR125	Non Reverse Pins, Set of 4	15.20
400	3465-3	Vertical Shaft, Standard or Light Thrust	512.00
450		Vertical Spacer	36.30
451		Vertical Under Gear Spacer	25.30
480	3000-500	Retaining Ring	11.60
500	3464	Horizontal Shaft	207.00
500		Horizontal Shaft, 7:4, 2:1, 5:2, & 3:2 Ratios	444.00
550		Horizontal Outer Spacer	25.30
551		Horizontal Inner Spacer	25.30
560	5237	Locknut Set	77.60
600	2-7315BG	Thrust Bearing, Standard or Light Thrust	710.00
601	6215	Vertical Lower Bearing	90.30
602	JH211710/49	Horizontal Outer Bearing	94.00
603	JH211710/49	Horizontal Inner Bearing	94.00
700	P700M	Drive Sleeve	138.00
701	MK5	Drive Sleeve Key	1.60
702	N-14	Drive Sleeve Locknut	16.30
801	7075-7	Oil Tube (Order with Bottom Plug)	24.30
802	24370	Oil Seal	19.00
803		Main Oil Line	8.30
804	S 25	Oil Line Manifold	33.90
804	E25W	Oil Line Manifold with Fittings	34.70
807		Gear Oil Line	4.50
808		Horizontal Carrier Oil Line	4.50
809		Thrust Bearing Oil Line	4.50
816	3353	Cooling Coil	119.00
825	GC 150A	Complete Set of Gaskets (S/N below S/N 231989)	16.00
	51531	Loctite Gasket Sealant 50ml tube (S/N 231989 & above)	30.50
910	MK6	Vertical Shaft Gear Key	1.80
911	MK6	Horizontal Shaft Gear Key	1.80
912	MK15	Horizontal Shaft Key	5.60
920		Not available on this model	
	P1030-4	Oil Sight Glass	12.30
		Labor, Oil & Paint; Repair or Ratio Changes, Net	710.60

Gear Set Prices: Gear Sets Sold in Sets Only

Increasing Ratios

Model	1:1	10:11	5:6	3:4	4:7
150A	823.00	1020.00	1080.00	1080.00	1620.00

Decreasing Ratios

Model	11:10	6:5	5:4	4:3	2:1
150A	1020.00	1080.00	1080.00	1080.00	1620.00

11:10
 977.00

FOR HEAVY THRUST (SH) OR SPECIAL ROTATION PARTS, CONTACT FACTORY.
 MINIMUM ORDER VALUE - \$100.00 NET.

SOME PART NUMBERS DETERMINED BY RATIO AND/OR OPTIONAL FEATURES. ALWAYS
 PROVIDE SERIAL NUMBER OF DRIVE WHEN ORDERING PARTS FOR VERIFICATION.



Post Office Box 1789
 Amarillo, Texas 79105
 2401 Sundown Lane (79118)
 Ph. 806 622 1273
 Fax 806 622 3258

Prices effective 02/01/2011. Subject to Change without Notice

Model 250, 300, & 350 Parts Price List					
STANDARD DRIVE, TYPE S, FIGURE 1 ROTATION					
Ref. No.	Model 250	Model 300 & 350	Part No.	Description	Price
10	X	X	M10F	Gear Case	1500.00
11	X	X	M11B	Cover	155.00
12	X	X	M12T	Thrust Bearing Carrier	375.00
15	X	X	M15T	Horizontal Carrier, Speed Increasing, Except 10:11 and 4:5	735.28
15	X	X	M15TS	Horizontal Carrier, Speed Decreasing, 1:1, 10:11, & 4:5	773.00
16	X	X	L16A	Oil Seal Plate	119.00
17	X	X	M17TW	Bottom Plug With Oil Tube	103.00
	X	X	E18	Inspection Plate (Not Shown)	19.20
19	X	X	M19T	Oil Screw	137.00
20				Not available on this model	
21	X	X	M21T	Thrust Bearing Cover	276.00
22	X	X	E22	Cover Plug	11.80
24	X	X	M24R-1	Non Reverse Clutch	379.00
241	X	X		Drive Pins, Set of 2	7.90
242	X	X	NR 250	Non Reverse Pins, Set of 4	33.10
400	X	X	5590	Vertical Shaft, Increasing, 1:1, & 11:10 Ratios	662.00
400	X	X	5627	Vertical Shaft, Decreasing Ratios	901.00
450	X	X		Vertical Spacer	74.70
451	X	X		Vertical Under Gear Spacer	94.80
480	X	X	M40T	Cup Adjustment Plate	75.00
500	X	X	5594	Horizontal Shaft, 1:1, 10:11 & 11:10 Ratios	456.00
500	X	X	5598	Horizontal Shaft, 6:5, 4:3, 3:2, & 5:4 Ratios	456.00
500	X	X	5612	Horizontal Shaft, 2:1 Ratio	739.00
500	X	X	5667	Horizontal Shaft, 3:1 Ratio	739.00
500	X	X	5636	Horizontal Shaft, 5:2 Ratio	739.00
500	X	X	5741	Horizontal Shaft, 7:4 Ratio	739.00
500	X	X	5599	Horizontal Shaft, 4:7, 2:3, & 3:4 Ratios	739.00
550	X	X		Horizontal Outer Spacer	57.30
551	X	X		Horizontal Inner Spacer	57.30
560	X	X	6217	Locknut Set	173.00
561	X	X	AN17/W17	Horizontal Gear Retainer	34.10
600	X	X	HM926710/40	Thrust Bearing	749.00
601	X	X	JHM516810/49	Vertical Lower Bearing	166.40
602	X	X	742/749	Horizontal Outer Bearing	214.60
603	X	X	6535/6580	Horizontal Inner Bearing	183.40
700	X	X	5585	Drive Sleeve	198.00
701	X	X	MK14	Drive Sleeve Key	12.40
702	X	X	AN16	Drive Sleeve Locknut	29.60
801	X	X	7075-12	Oil Tube (Order with Bottom Plug)	30.70
802	X	X	29384	Oil Seal	32.10
803	X	X		Main Oil Line	8.30
804	X	X	S 25	Oil Line Manifold	33.90
804	X	X	E25W	Oil Line Manifold with Fittings	34.70
807	X	X		Gear Oil Line	4.50
808	X	X		Horizontal Carrier Oil Line	4.50
809	X	X		Thrust Bearing Oil Line	4.50
816	X		5377	Cooling Coil	198.00
816		X	FP5X12-14/AMA	Heat Exchanger	854.00
825	X	X	GC 250	Complete Set of Gaskets (below S/N 231989)	18.70
	X	X	51531	Loctite Gasket Sealant 50ml tube (S/N 231989 & above)	30.50
910	X	X	MK12	Vertical Shaft Gear Key	3.10
911	X	X	MK20	Horizontal Shaft Gear Key	7.90
912	X	X	MK16	Horizontal Shaft Key	3.80
920	X	X	AN16	Oil Screw Locknut	29.60
	X	X	P1030-4	Oil Sight Glass	12.30
	X	X	SM 300	Shims	37.20
	X			Labor, Oil & Paint; Repair or Ratio Changes, Net	865.70
		X		Labor, Oil & Paint; Repair or Ratio Changes, Net	942.70

Gear Set Prices: Gear Sets Sold in Sets Only

Increasing Ratios

Model	1:1	10:11	5:6	4:5	2:3	4:7	1:2
250/300	1730.00	2760.00	1990.00	2970.00	2760.00	2760.00	3150.00
350	1650.00	2640.00	1900.00	2850.00	2760.00		

Decreasing Ratios

Model	11:10	6:5	5:4	4:3	3:2	8:5	7:4	2:1	5:2	3:1	9:4
250/300	2760.00	2060.00	2060.00	2060.00	2060.00	3160.00	2460.00	2280.00	2020.00	2370.00	2530.00
350	2760.00	2060.00	2060.00	2060.00	2060.00		2460.00	2280.00	2020.00	2370.00	2530.00

FOR HEAVY THRUST (SH) OR SPECIAL ROTATION PARTS, CONTACT FACTORY.
 MINIMUM ORDER VALUE - \$100.00 NET.

SOME PART NUMBERS DETERMINED BY RATIO AND/OR OPTIONAL FEATURES. ALWAYS PROVIDE SERIAL NUMBER OF DRIVE WHEN ORDERING PARTS FOR VERIFICATION.



Prices effective 02/01/2011. Subject to Change without Notice

Combination Part Prices

Ref No.	Description	20 & 30		40		60A		80A, 100A, & 125A	
		Part No.	Price	Part No.	Price	Part No.	Price	Part No.	Price
12	Thrust Bearing Carrier	S12S	344.00	J12S	477.00	P12SRC	410.00	P12S2	410.00
20	Thrust Bearing Bushing	Not Used		J20S	140.00	Not Used		Not Used	
21	Thrust Bearing Cover	S1121R	438.00	J2321	287.00	P21N	243.00	P21N	243.00
400	Vertical Shaft		546.00		573.00		544.00		544.00
600	Thrust Bearings	2-7407BG	345.00	2-7312BG	331.00	2-7312BG	331.00	2-7412BG	826.00
702	Drive Sleeve Locknut	N-07	4.50	2243	115.00	N-11	10.00	N-11	10.00
724	Sliding Clutch	1183	287.00	2248	320.00	3293	375.00	3293	375.00
736	Non-Reverse Pins, Set	NR C20	4.40	NR C40	4.80	NR C60	10.90	NR C80	10.90
756	Drive Sleeve	1212	287.00	2241	314.00	3290	361.00	3290	361.00
757	Drive Sleeve Cover	1213	344.00	2242	344.00	3291	412.00	3291	412.00
758	Bearing Bushing	1214	204.00	2244	218.00	3294	231.00	3294	231.00
769	Retaining Ring, Outer	3000-281	4.70	3000-334	7.60	3000-393	7.60	3000-393	7.60
770	Retaining Ring, Inner	3100-137	0.60	3100-177	0.80	3100-215	3.00	3100-215	3.00
792	Gib Key		3.10		5.30		3.10		3.10
6200Z	Steady Bearing	6207-2RS	39.40	6209-2RS	51.40	6211-2RS	81.70	6211-2RS	81.70

Ref No.	Description	150A		200A		250, 300, & 350	
		Part No.	Price	Part No.	Price	Part No.	Price
12	Thrust Bearing Carrier	P12C	442.00	M12SB	609.00		
20	Thrust Bearing Bushing	Not Used		Not Used		5643	516.00
21	Thrust Bearing Cover	P21NC	366.00	M21C	477.00	M21TC	512.00
400	Vertical Shaft		558.00		861.00		1071.00
600	Thrust Bearings	2-7315BG	709.00	2-7415BG	1718.00		
702	Drive Sleeve Locknut	N-14	16.30	AN-15	24.90	AN-16	29.60
724	Sliding Clutch	3468	493.00	5274	512.00	5647	748.00
736	Non-Reverse Pins, Set	NR C150A	33.10	NR C200	33.10	NR C250	33.10
756	Drive Sleeve	3689	678.00	5271	803.00	5644	803.00
757	Drive Sleeve Cover	3690	638.00	5272	899.00	5645	786.00
758	Bearing Bushing	3469	244.00	5273	271.00	5646	695.00
769	Retaining Ring, Outer	3000-433	8.60	3000-475	43.10	3000-500	11.60
770	Retaining Ring, Inner	3100-237	5.30	3100-275	8.30	5100-293	10.00
792	Gib Key		3.10		6.30		6.30
6200Z	Steady Bearing	6212-2RS	83.90	6214-2RS	112.00	6215-2RS	155.00

FOR HEAVY THRUST, SOLID SHAFT, AUTOMATIC COMBINATION
OR SPECIAL ROTATION PARTS, CONTACT FACTORY
MINIMUM ORDER VALUE - \$100.00 NET.

SOME PART NUMBERS DETERMINED BY RATIO AND/OR OPTIONAL FEATURES. ALWAYS
PROVIDE SERIAL NUMBER OF DRIVE SHEN ORDERING PARTS FOR VERIFICATION.