



**Amarillo
Gear
Company**

Post Office Box 1789
Amarillo, Texas 79105
2401 Sundown Lane (79118)
Ph. 806 622 1273
Fax 806 622 3258

Revision date 2/1/2007

Instructions for Using Current Production Parts Price List for Small Pump Drives

1. These parts lists are for current production models from the model 20 to the model 350.
Contact Amarillo Gear Company for part prices for larger models, heavy thrust models, and special rotation gear drives.
2. To make sure you get the correct parts, always provide the serial number of the gear drive when ordering parts.
3. General drawing for pump drives and combination assemblies are provided for parts identification.
4. Prices are subject to change without notice.

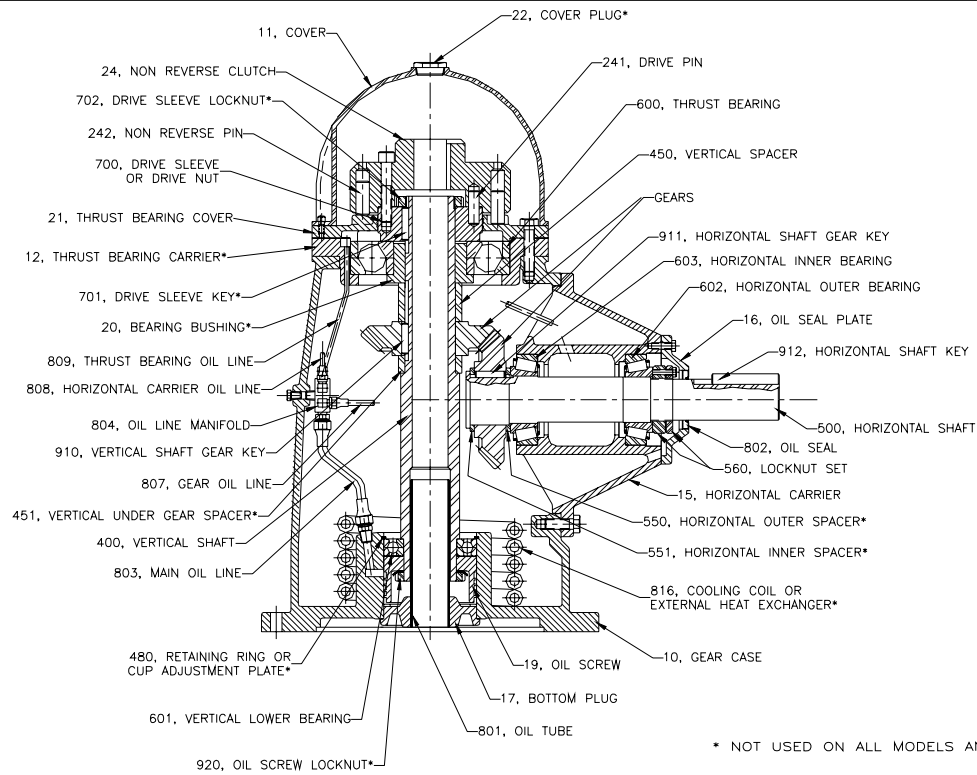
PPC 2/07



A member of The Marmon Group of companies

Copyright ©2003 Amarillo Gear Co.

PPC 2/07



DR.BY: R. ADAMS
 CK.BY:
 APP.BY:

**AMARILLO
 GEAR
 COMPANY**

TYPICAL
 CROSS
 SECTION

MODEL:	20-350
DATE:	11/4/02
PART NO.	
DWG NO.	A5019



Post Office Box 1789
 Amarillo, Texas 79105
 2401 Sundown Lane (79118)
 Ph. 806 622 1273
 Fax 806 622 3258

Prices effective 2/1/2008. Subject to Change without Notice

Model 20 and 30 Parts Price List						
STANDARD DRIVE, TYPE S OR SL, FIGURE 1 ROTATION						
Ref. No.	Model 20	Model 30	Part No.	Description	Price	
10	X	X	S10C	Gear Case	425.00	
11	X	X	S11S	Cover	40.60	
12	X	X		Not available on this model		
15	X	X	S15T	Horizontal Carrier	147.00	
15	X	X	S15TS	Short Horizontal Carrier, 4:3 & 3:2 Ratios	345.00	
16	X	X	S16T	Oil Seal Plate	25.60	
17	X	X	S17FW	Bottom Plug With Oil Tube	52.60	
	X	X	S18	Inspection Plate (Not Shown)	27.60	
19	X	X	S19F	Oil Screw	44.30	
20		X	1331	Bearing Bushing, Light Thrust	281.00	
21	X	X	S21RD	Thrust Bearing Cover	54.80	
22	X	X		Not available on this model		
24	X	X	S24R	Non Reverse Clutch	127.00	
241	X	X		Drive Pins, Set of 2	1.90	
242	X	X	NR 20	Non Reverse Pins, Set of 4	3.80	
400	X	X		Vertical Shaft, Standard & Light Thrust, Drive Sleeve	236.00	
400	X	X		Vertical Shaft, Standard & Light Thrust, Drive Nut	255.00	
450	X	X		Vertical Spacer	15.80	
451	X	X		Vertical Under Gear Spacer	16.30	
480	X	X	3000-312	Retaining Ring	5.30	
500	X	X		Horizontal Shaft 1:1, 6:5, & Increasing Ratios	73.60	
500	X	X		Horizontal Shaft, 3:2 & 4:3 Ratios	248.00	
550	X	X		Horizontal Outer Spacer	16.30	
551	X	X		Horizontal Inner Spacer	16.30	
560	X	X	1231	Locknut Set	30.80	
600	X	X	7407BG	Thrust Bearing	154.00	
600	X		6407	Thrust Bearing , Light Thrust	74.30	
600		X	QJ309	Thrust Bearing , Light Thrust	167.00	
601	X	X	6208	Vertical Lower Bearing	26.50	
602	X	X	25821/77	Horizontal Outer Bearing	26.60	
603	X	X	25821/77	Horizontal Inner Bearing	26.60	
700	X	X	1168	Drive Nut, Obsolete	114.00	
700	X	X	1358	Drive Sleeve, Current Design	89.70	
701	X	X		Not available on this model		
702	X	X		Not available on this model		
801	X	X	1237	Oil Tube (Order with Bottom Plug)	16.70	
802	X	X	12456	Oil Seal	6.70	
803	X	X		Main Oil Line	6.50	
804	X	X	1195	Oil Line Manifold	30.10	
804	X	X	1195	Oil Line Manifold with Fittings	37.40	
807	X	X		Gear Oil Line	3.00	
808	X	X		Horizontal Carrier Oil Line	3.00	
809	X	X		Thrust Bearing Oil Line	3.00	
816	X	X		Not available on this model		
910	X	X	MK1	Vertical Shaft Gear Key	1.50	
911	X	X	MK1	Horizontal Shaft Gear Key	1.50	
912	X	X	MK2	Horizontal Shaft Key	1.10	
	X	X	G 20	Set of Gear Case Gaskets, S/N 231989 and Lower	5.50	
920	X	X		Not available on this model		
	X	X		Labor, Oil, & Paint; Repair or Ratio Changes, Net	308.00	

Gear Set Prices: Gear Sets Sold in Sets Only

Increasing Ratios

Model	1:1	5:6	3:4	2:3	4:7	1:2	1:3
20 & 30	329.00	483.00	675.00	455.00	609.00	505.00	910.00

Decreasing Ratios

Model	6:5	4:3	3:2	2:1			
20 & 30	339.00	500.00	698.00	469.00			

FOR HEAVY THRUST (SH) OR SPECIAL ROTATION PARTS, CONTACT FACTORY.

MINIMUM ORDER VALUE - \$50.00 NET.

ALWAYS PROVIDE SERIAL NUMBER OF DRIVE WHEN ORDERING PARTS.



Post Office Box 1789
 Amarillo, Texas 79105
 2401 Sundown Lane (79118)
 Ph. 806 622 1273
 Fax 806 622 3258

Prices effective 2/1/2008. Subject to Change without Notice

Model 40 Parts Price List			
STANDARD DRIVE, TYPE S OR SL, FIGURE 1 ROTATION			
Ref. No.	Part No.	Description	Price
10	J10F	Gear Case, 12" BD	767.00
10	J10FX	Gear Case, 16-1/2" BD	767.00
11	J11A	Cover	91.20
12	J12B1	Thrust Bearing Carrier	168.00
15	J15D	Horizontal Carrier	255.00
15	J15DS	Short Horizontal Carrier, 4:3, 3:2, 7:4, 2:1 & 3:1 Ratios	356.00
16	J16A	Oil Seal Plate	47.50
17	J17EW	Bottom Plug With Oil Tube	59.50
	E18	Inspection Plate (Not Shown)	17.10
19	J19E	Oil Screw	57.20
20	J20	Thrust Bearing Bushing	59.90
21	J21RB	Thrust Bearing Cover	60.00
22		Not available on this model	
24	J24R	Non Reverse Clutch	146.00
241		Drive Pins, Set of 2	2.10
242	NR 40	Non Reverse Pins, Set of 4	4.20
400		Vertical Shaft, Standard & Light Thrust, Drive Sleeve	267.00
400		Vertical Shaft, Standard & Light Thrust, Drive Nut	278.00
450		Vertical Spacer	17.10
451		Vertical Under Gear Spacer	18.90
480	3000-393	Retaining Ring	6.80
500	2258	Horizontal Shaft	116.00
550		Horizontal Outer Spacer	18.90
551		Horizontal Inner Spacer	18.90
560	2230	Locknut Set	31.70
600	6312	Thrust Bearing, Light Thrust	101.00
600	7312BG	Thrust Bearing, Standard Thrust	147.00
601	6211	Vertical Lower Bearing	45.90
602	M802011/48	Horizontal Outer Bearing	25.30
603	M802011/48	Horizontal Inner Bearing	25.30
700	2124	Drive Nut, Obsolete	114.00
700	2381	Drive Sleeve, Current Design	94.40
701		Not available on this model	
702		Not available on this model	
801	7075-2	Oil Tube (Order with Bottom Plug)	17.70
802	15141	Oil Seal	7.40
803		Main Oil Line	6.00
804	E25	Oil Line Manifold	20.80
804	E25W	Oil Line Manifold with Fittings	30.90
807		Gear Oil Line	4.00
808		Horizontal Carrier Oil Line	4.00
809		Thrust Bearing Oil Line	4.00
816	2255	Cooling Coil	73.00
910	MK3	Vertical Shaft Gear Key	1.50
911	MK3	Horizontal Shaft Gear Key	1.50
912	MK10	Horizontal Shaft Key	1.50
	G 40	Set of Gear Case Gaskets, S/N 231989 and Lower	9.00
920		Not available on this model	
	P1030-4	Oil Sight Glass	10.90
		Labor, Oil, & Paint; Repair or Ratio Changes, Net	377.00

Gear Set Prices: Gear Sets Sold in Sets Only

Increasing Ratios

Model	1:1	5:6	3:4	2:3	4:7	1:2	1:3
40	362.00	483.00	667.00	545.00	656.00	517.00	949.00

Decreasing Ratios

Model	6:5	4:3	3:2	7:4	2:1	5:2	3:1
40	483.00	667.00	545.00	656.00	517.00	875.00	983.00

FOR HEAVY THRUST (SH) OR SPECIAL ROTATION PARTS, CONTACT FACTORY.
 MINIMUM ORDER VALUE - \$50.00 NET.
 ALWAYS PROVIDE SERIAL NUMBER OF DRIVE WHEN ORDERING PARTS.



Post Office Box 1789
 Amarillo, Texas 79105
 2401 Sundown Lane (79118)
 Ph. 806 622 1273
 Fax 806 622 3258

Prices effective 2/1/2008. Subject to Change without Notice

Model 60A and 80A Parts Price List					
STANDARD DRIVE, TYPE S OR SL, FIGURE 1 ROTATION					
Ref. No.	Model 60A	Model 80A	Part No.	Description	Price
10	X	X	P10D	Gear Case	969.00
11	X	X	P11B	Cover	131.00
12	X		P12	Thrust Bearing Carrier	194.00
12		X	P12AR	Thrust Bearing Carrier	194.00
12	X		P12AR	Thrust Bearing Carrier, Light Thrust	194.00
12		X	P12SR	Thrust Bearing Carrier, Light Thrust	335.00
15	X		P13TA	Horizontal Carrier	277.00
15	X		P13TS	Short Horizontal Carrier, 8:5, 2:1, & 3:1 Ratios	445.00
15		X	P14TA	Horizontal Carrier	277.00
15		X	P14TS	Short Horizontal Carrier, 5:2, 2:1, & 3:1 Ratios	445.00
16	X		P16D	Oil Seal Plate	48.20
16		X	P16TFS	Oil Seal Plate	49.20
17	X	X	P17EW	Bottom Plug With Oil Tube	60.30
	X	X	E18	Inspection Plate (Not Shown)	17.10
19	X	X	P19E	Oil Screw	55.70
20		X		Not available on this model	
21	X		P21RDH	Thrust Bearing Cover	97.20
21		X	P21RBH	Thrust Bearing Cover	112.00
21	X		P21RBH	Thrust Bearing Cover, Light Thrust	112.00
21		X	P21RDH	Thrust Bearing Cover, Light Thrust	97.20
22	X	X	E22	Cover Plug	10.40
24	X	X	P24R-1	Non Reverse Clutch	149.00
241	X	X		Drive Pins, Set of 2	4.80
242	X	X	NR60 or NR80	Non Reverse Pins, Set of 4	9.60
400		X	3765-1	Vertical Shaft, Standard Thrust	255.00
400	X	X		Vertical Shaft, Light Thrust	255.00
450	X	X		Vertical Spacer	18.40
451	X	X		Vertical Under Gear Spacer	15.90
480	X	X	3000-433	Retaining Ring	7.60
500	X		3391	Horizontal Shaft	124.00
500		X	3392	Horizontal Shaft	124.00
500	X	X		Horizontal Shaft, 8:5, 7:4, 2:1, & 3:1 Ratios	545.00
550	X	X		Horizontal Outer Spacer	15.90
551	X	X		Horizontal Inner Spacer	15.90
560	X		2230	Locknut Set	31.70
560		X	3268	Locknut Set	46.70
600	X		7312	Thrust Bearing	147.00
600		X	7412	Thrust Bearing	315.00
600	X		6412	Thrust Bearing, Light Thrust	348.00
600		X	2-7312	Thrust Bearing, Light Thrust	294.00
601	X	X	6212	Vertical Lower Bearing	53.20
602	X		HM804810/40	Horizontal Outer Bearing	82.00
602		X	JHM807012/45	Horizontal Outer Bearing	72.30
603	X		HM804810/48	Horizontal Inner Bearing	52.70
603		X	HM807010/46	Horizontal Inner Bearing	60.30
700	X	X	3841	Drive Sleeve	77.10
701	X	X	MK5	Drive Sleeve Key	1.40
702	X	X	N-11	Drive Sleeve Locknut	8.90
801	X	X	7075-3	Oil Tube (Order with Bottom Plug)	19.20
802	X		15141	Oil Seal	7.40
802		X	18733	Oil Seal	10.60
803	X	X		Main Oil Line	6.00
804	X	X	E25	Oil Line Manifold	20.80
804	X	X	E25W	Oil Line Manifold with Fittings	30.90
807	X	X		Gear Oil Line	4.00
808	X	X		Horizontal Carrier Oil Line	4.00
809	X	X		Thrust Bearing Oil Line	4.00
816	X	X	3353	Cooling Coil	105.00
910	X	X	MK5	Vertical Shaft Gear Key	1.40
911	X	X	MK5	Horizontal Shaft Gear Key	1.40
912	X	X	MK10	Horizontal Shaft Key	1.50
	X	X	G 60 or G 80	Set of Gear Case Gaskets, S/N 231989 and Lower	8.70
920				Not available on this model	
	X	X	P1030-4	Oil Sight Glass	10.90
	X			Labor, Oil & Paint; Repair or Ratio Changes, Net	423.00
		X		Labor, Oil & Paint; Repair or Ratio Changes, Net	463.00

Gear Set Prices: Gear Sets Sold in Sets Only

Increasing Ratios

Model	1:1	10:11	5:6	4:5	3:4	2:3	5:8	4:7	1:2	2:5	1:3
60A & 80A	402.00	509.00	509.00	617.00	751.00	533.00	1010.00	797.00	758.00	1420.00	1450.00

Decreasing Ratios

Model	11:10	6:5	5:4	4:3	3:2	8:5	7:4	2:1	5:2	3:1	9:4
60A & 80A	509.00	509.00	509.00	509.00	533.00	1010.00	1050.00	971.00	971.00	1120.00	971.00

FOR HEAVY THRUST (SH) OR SPECIAL ROTATION PARTS, CONTACT FACTORY.
 MINIMUM ORDER VALUE - \$50.00 NET.
 ALWAYS PROVIDE SERIAL NUMBER OF DRIVE WHEN ORDERING PARTS.



Post Office Box 1789
 Amarillo, Texas 79105
 2401 Sundown Lane (79118)
 Ph. 806 622 1273
 Fax 806 622 3258

Prices effective 2/1/2008. Subject to Change without Notice

Model 100A and 125A Parts Price List					
STANDARD DRIVE, TYPE S OR SL, FIGURE 1 ROTATION					
Ref. No.	Model 100A	Model 125A	Part No.	Description	Price
10	X	X	P10D	Gear Case	969.00
11	X	X	P11B	Cover	131.00
12	X		P12AR	Thrust Bearing Carrier	194.00
12		X	P12SR	Thrust Bearing Carrier	335.00
12	X	X	P12SR	Thrust Bearing Carrier, Light Thrust	335.00
15	X		P14TA	Horizontal Carrier	277.00
15	X		P14TS	Short Horizontal Carrier, 5:2, 2:1, & 3:1 Ratios	445.00
15		X	P15TA	Horizontal Carrier	323.00
16	X	X	P16TFS	Oil Seal Plate	49.20
17	X	X	P17EW	Bottom Plug With Oil Tube	60.30
	X	X	E18	Inspection Plate (Not Shown)	17.10
19	X	X	P19E	Oil Screw	55.70
20				Not available on this model	
21	X		P21RBH	Thrust Bearing Cover	112.00
21		X	P21RDH	Thrust Bearing Cover	97.20
21	X	X	P21RDH	Thrust Bearing Cover, Light Thrust	97.20
22	X	X	E22	Cover Plug	10.40
24	X	X	P24R-1	Non Reverse Clutch	149.00
241	X	X		Drive Pins, Set of 2	4.80
242	X	X	NR 100	Non Reverse Pins, Set of 4	9.60
400	X		3765-1	Vertical Shaft, Standard Thrust	255.00
400		X	3765-4	Vertical Shaft, Standard Thrust	255.00
400	X	X	3765-4	Vertical Shaft, Light Thrust	255.00
450	X	X		Vertical Spacer	18.40
451	X	X		Vertical Under Gear Spacer	15.90
480	X	X	3000-433	Retaining Ring	7.60
500	X		3392	Horizontal Shaft	124.00
500		X	3267	Horizontal Shaft	124.00
500	X			Horizontal Shaft, 5:2, 2:1, & 3:1 Ratios	545.00
550	X	X		Horizontal Outer Spacer	15.90
551	X	X		Horizontal Inner Spacer	15.90
560	X	X	3268	Locknut Set	46.70
600	X		7412BG	Thrust Bearing	315.00
600		X	2-7312	Thrust Bearing	294.00
600	X	X	2-7312	Thrust Bearing, Light Thrust	294.00
601	X	X	6212	Vertical Lower Bearing	53.20
602	X		JHM807012/45	Horizontal Outer Bearing	72.30
602		X	HM807010/46	Horizontal Outer Bearing	60.30
603	X		HM807010/46	Horizontal Inner Bearing	60.30
603		X	5535/5566	Horizontal Inner Bearing	270.00
700	X	X	3841	Drive Sleeve	77.10
701	X	X	MK5	Drive Sleeve Key	1.40
702	X	X	N-11	Drive Sleeve Locknut	8.90
801	X	X	7075-3	Oil Tube (Order with Bottom Plug)	19.20
802	X	X	18733	Oil Seal	10.60
803	X	X		Main Oil Line	6.00
804	X	X	E25	Oil Line Manifold	20.80
804	X	X	E25W	Oil Line Manifold with Fittings	30.90
807	X	X		Gear Oil Line	4.00
808	X	X		Horizontal Carrier Oil Line	4.00
809	X	X		Thrust Bearing Oil Line	4.00
816	X	X	3353	Cooling Coil	105.00
910	X	X	MK5	Vertical Shaft Gear Key	1.40
911	X	X	MK5	Horizontal Shaft Gear Key	1.40
912	X	X	MK10	Horizontal Shaft Key	1.50
	X	X	G 100	Set of Gear Case Gaskets, S/N 231989 and Lower	8.70
920				Not available on this model	
	X	X	P1030-4	Oil Sight Glass	10.90
	X			Labor, Oil & Paint; Repair or Ratio Changes, Net	463.00
		X		Labor, Oil & Paint; Repair or Ratio Changes, Net	489.00

Gear Set Prices: Gear Sets Sold in Sets Only

Increasing Ratios

Model	1:1	10:11	5:6	4:5	3:4	2:3	5:8	4:7	1:2	2:5
100A	478.00	509.00	509.00	617.00	788.00	675.00	1010.00	797.00	758.00	1420.00
125A	478.00	509.00	509.00	617.00	788.00	675.00		797.00	758.00	

Decreasing Ratios

Model	11:10	6:5	5:4	4:3	3:2	8:5	7:4	2:1	5:2	3:1	9:4
100A	509.00	509.00	509.00	509.00	533.00	1010.00	1050.00	971.00	971.00	1120.00	971.00
125A	509.00	509.00	509.00	509.00	533.00						

FOR HEAVY THRUST (SH) OR SPECIAL ROTATION PARTS, CONTACT FACTORY.

MINIMUM ORDER VALUE - \$50.00 NET.

ALWAYS PROVIDE SERIAL NUMBER OF DRIVE WHEN ORDERING PARTS.



Post Office Box 1789
 Amarillo, Texas 79105
 2401 Sundown Lane (79118)
 Ph. 806 622 1273
 Fax 806 622 3258

Prices effective 2/1/2008. Subject to Change without Notice

Model 150A Parts Price List			
STANDARD DRIVE, TYPE S OR SL, FIGURE 1 ROTATION			
Ref. No.	Part No.	Description	Price
10	P10M	Gear Case	969.00
11	P11B	Cover	131.00
12	P12S2M	Thrust Bearing Carrier, Standard or Light Thrust	364.00
15	P15M	Horizontal Carrier	412.00
15	P15MS	Short Horizontal Carrier, 7:4, 2:1 & 5:2 Ratios	483.00
16	M16B	Oil Seal Plate	75.20
17	P17MW	Bottom Plug With Oil Tube	71.00
	E18	Inspection Plate (Not Shown)	17.10
19	P19M	Oil Screw	88.80
20		Not available on this model	
21	P21RMH	Thrust Bearing Cover, Standard or Light Thrust	180.00
22	E22	Cover Plug	10.40
24	P24RM	Non Reverse Clutch	219.00
241		Drive Pins, Set of 2	4.80
242	NR125	Non Reverse Pins, Set of 4	13.40
400	3465-3	Vertical Shaft, Standard or Light Thrust	455.00
450		Vertical Spacer	26.10
451		Vertical Under Gear Spacer	22.50
480	3000-500	Retaining Ring	10.30
500	3464	Horizontal Shaft	184.00
500		Horizontal Shaft, 7:4, 2:1, 5:2, & 3:2 Ratios	395.00
550		Horizontal Outer Spacer	22.50
551		Horizontal Inner Spacer	22.50
560	5237	Locknut Set	69.00
600	2-7315BG	Thrust Bearing, Standard or Light Thrust	630.00
601	6215	Vertical Lower Bearing	80.30
602	JH211710/49	Horizontal Outer Bearing	83.60
603	JH211710/49	Horizontal Inner Bearing	83.60
700	P700M	Drive Sleeve	123.00
701	MK5	Drive Sleeve Key	1.40
702	N-14	Drive Sleeve Locknut	14.50
801	7075-7	Oil Tube (Order with Bottom Plug)	21.60
802	24370	Oil Seal	16.90
803		Main Oil Line	6.00
804	E25	Oil Line Manifold	20.80
804	E25W	Oil Line Manifold with Fittings	30.90
807		Gear Oil Line	4.00
808		Horizontal Carrier Oil Line	4.00
809		Thrust Bearing Oil Line	4.00
816	3353	Cooling Coil	105.00
910	MK6	Vertical Shaft Gear Key	1.50
911	MK6	Horizontal Shaft Gear Key	1.50
912	MK15	Horizontal Shaft Key	5.00
	G 125	Set of Gear Case Gaskets, S/N 231989 and Lower	10.40
920		Not available on this model	
	P1030-4	Oil Sight Glass	10.90
		Labor, Oil & Paint; Repair or Ratio Changes, Net	489.00

Gear Set Prices: Gear Sets Sold in Sets Only

Increasing Ratios

Model	1:1	10:11	5:6	4:5	3:4	2:3	4:7	1:2
150A	731.00	903.00	958.00	1050.00	958.00	1050.00	1440.00	1440.00

Decreasing Ratios

Model	11:10	6:5	5:4	4:3	3:2	7:4	2:1	5:2
150A	903.00	958.00	958.00	958.00	958.00	1440.00	1440.00	1440.00

FOR HEAVY THRUST (SH) OR SPECIAL ROTATION PARTS, CONTACT FACTORY.
 MINIMUM ORDER VALUE - \$50.00 NET.
 ALWAYS PROVIDE SERIAL NUMBER OF DRIVE WHEN ORDERING PARTS.



Post Office Box 1789
 Amarillo, Texas 79105
 2401 Sundown Lane (79118)
 Ph. 806 622 1273
 Fax 806 622 3258

Prices effective 2/1/2008. Subject to Change without Notice

Model 200A Parts Price List			
STANDARD DRIVE, TYPE S OR SL, FIGURE 1 ROTATION			
Ref. No.	Part No.	Description	Price
10	M10F	Gear Case	1330.00
11	M11B	Cover	138.00
12	M12	Thrust Bearing Carrier, Standard or Light Thrust	279.00
15	M13TF	Horizontal Carrier, Speed Increasing, 1:1 & 11:10 Ratios	582.00
15	M13STF	Horizontal Carrier, Speed Decreasing, Except 11:10 Ratio	582.00
16	M16B	Oil Seal Plate	75.20
17	M17BW	Bottom Plug With Oil Tube	67.50
	E18	Inspection Plate (Not Shown)	17.10
19	M19B	Oil Screw	81.10
20		Not available on this model	
21	M21RDH	Thrust Bearing Cover, Standard or Light Thrust	225.00
22	E22	Cover Plug	10.40
24	M24R-1	Non Reverse Clutch	336.00
241		Drive Pins, Set of 2	6.70
242	NR 200	Non Reverse Pins, Set of 4	29.40
400	5853	Vertical Shaft, Standard or Light Thrust	441.00
450		Vertical Spacer	32.30
451		Vertical Under Gear Spacer	23.20
480	3000-550	Retaining Ring	27.40
500	5262	Horizontal Shaft, Increasing, 1:1, & 11:10 Ratios	231.00
500	5261	Horizontal Shaft, Decreasing	231.00
500	5383	Horizontal Shaft, 8:5 Ratio	484.00
500	5813	Horizontal Shaft, 7:4 Ratio	657.00
500	5345	Horizontal Shaft, 5:2 Ratio	484.00
500	5265	Horizontal Shaft, 2:1 Ratio	509.00
500	5339	Horizontal Shaft, 3:1 Ratio	548.00
550		Horizontal Outer Spacer	23.70
551		Horizontal Inner Spacer	23.70
560	5237	Locknut Set	69.00
600	2-7315BG	Thrust Bearing, Standard or Light Thrust	630.00
601	6216	Vertical Lower Bearing	106.00
602	632/642	Horizontal Outer Bearing	272.00
603	H414210/49	Horizontal Inner Bearing	114.00
700	5411	Drive Sleeve	147.00
701	MK6	Drive Sleeve Key	1.50
702	AN-15	Drive Sleeve Locknut	22.10
801	7075-4	Oil Tube (Order with Bottom Plug)	25.50
802	24370	Oil Seal	16.90
803		Main Oil Line	6.00
804	E25	Oil Line Manifold	20.80
804	E25W	Oil Line Manifold with Fittings	30.90
807		Gear Oil Line	4.00
808		Horizontal Carrier Oil Line	4.00
809		Thrust Bearing Oil Line	4.00
816	5377	Cooling Coil	176.00
816	5983	Copper Nickel Cooling Coils	717.00
910	MK6	Vertical Shaft Gear Key	1.50
911	MK6	Horizontal Shaft Gear Key	1.50
912	MK15	Horizontal Shaft Key	5.00
	G 200	Set of Gear Case Gaskets, S/N 231989 and Lower	12.70
920		Not available on this model	
	P1030-4	Oil Sight Glass	10.90
		Labor, Oil & Paint; Repair or Ratio Changes, Net	570.00

Gear Set Prices: Gear Sets Sold in Sets Only

Increasing Ratios

Model	1:1	10:11	5:6	4:5	3:4	2:3	4:7	1:2	4:9	2:5	1:3
200A	731.00	903.00	1100.00	1100.00	1160.00	1100.00	1670.00	1680.00	2250.00	1790.00	2100.00

Decreasing Ratios

Model	11:10	6:5	5:4	4:3	3:2	8:5	7:4	2:1	5:2	3:1
200A	903.00	1100.00	1100.00	1100.00	1100.00	1440.00	1440.00	1440.00	1720.00	1670.00

FOR HEAVY THRUST (SH) OR SPECIAL ROTATION PARTS, CONTACT FACTORY.
 MINIMUM ORDER VALUE - \$50.00 NET.
 ALWAYS PROVIDE SERIAL NUMBER OF DRIVE WHEN ORDERING PARTS.



Post Office Box 1789
 Amarillo, Texas 79105
 2401 Sundown Lane (79118)
 Ph. 806 622 1273
 Fax 806 622 3258

Prices effective 2/1/2008. Subject to Change without Notice

Model 250, 300, & 350 Parts Price List					
STANDARD DRIVE, TYPE S, FIGURE 1 ROTATION					
Ref. No.	Model 250	Model 300 & 350	Part No.	Description	Price
10	X	X	M10F	Gear Case	1330.00
11	X	X	M11B	Cover	138.00
12	X	X	M12T	Thrust Bearing Carrier	333.00
15	X	X	M15T	Horizontal Carrier, Speed Increasing, Except 10:11 and 4:5	654.00
15	X	X	M15TS	Horizontal Carrier, Speed Decreasing, 1:1, 10:11, & 4:5	687.00
16	X	X	L16A	Oil Seal Plate	105.00
17	X	X	M17TW	Bottom Plug With Oil Tube	91.20
	X	X	E18	Inspection Plate (Not Shown)	17.10
19	X	X	M19T	Oil Screw	122.00
20				Not available on this model	
21	X	X	M21T	Thrust Bearing Cover	245.00
22	X	X	E22	Cover Plug	10.40
24	X	X	M24R-1	Non Reverse Clutch	336.00
241	X	X		Drive Pins, Set of 2	6.70
242	X	X	NR 250	Non Reverse Pins, Set of 4	29.40
400	X	X	5590	Vertical Shaft, Increasing, 1:1, & 11:10 Ratios	589.00
400	X	X	5627	Vertical Shaft, Decreasing Ratios	801.00
450	X	X		Vertical Spacer	66.40
451	X	X		Vertical Under Gear Spacer	84.30
480	X	X	M40T	Cup Adjustment Plate	66.70
500	X	X	5594	Horizontal Shaft, 1:1, 10:11 & 11:10 Ratios	405.00
500	X	X	5598	Horizontal Shaft, 6:5, 4:3, 3:2, & 5:4 Ratios	405.00
500	X	X	5612	Horizontal Shaft, 2:1 Ratio	657.00
500	X	X	5667	Horizontal Shaft, 3:1 Ratio	657.00
500	X	X	5636	Horizontal Shaft, 5:2 Ratio	657.00
500	X	X	5741	Horizontal Shaft, 7:4 Ratio	657.00
500	X	X	5599	Horizontal Shaft, 4:7, 2:3, & 3:4 Ratios	657.00
550	X	X		Horizontal Outer Spacer	50.90
551	X	X		Horizontal Inner Spacer	50.90
560	X	X	6217	Locknut Set	154.00
561	X	X	AN17/W17	Horizontal Gear Retainer	30.30
600	X	X	HM926710/40	Thrust Bearing	1130.00
601	X	X	JHM516810/49	Vertical Lower Bearing	148.00
602	X	X	742/749	Horizontal Outer Bearing	190.00
603	X	X	6535/6580	Horizontal Inner Bearing	162.00
700	X	X	5585	Drive Sleeve	176.00
701	X	X	MK14	Drive Sleeve Key	11.00
702	X	X	AN16	Drive Sleeve Locknut	26.40
801	X	X	7075-12	Oil Tube (Order with Bottom Plug)	27.20
802	X	X	29384	Oil Seal	28.60
803	X	X		Main Oil Line	6.00
804	X	X	E25	Oil Line Manifold	20.80
804	X	X	E25W	Oil Line Manifold with Fittings	30.90
807	X	X		Gear Oil Line	4.00
808	X	X		Horizontal Carrier Oil Line	4.00
809	X	X		Thrust Bearing Oil Line	4.00
816	X		5377	Cooling Coil	176.00
816		X	568504010022	Heat Exchanger	759.00
816	X		5573	Copper Nickel Cooling Coils	717.00
910	X	X	MK12	Vertical Shaft Gear Key	2.80
911	X	X	MK20	Horizontal Shaft Gear Key	7.10
912	X	X	MK16	Horizontal Shaft Key	3.40
	X	X	G 250	Set of Gear Case Gaskets, S/N 231989 and Lower	12.80
920	X	X	AN16	Oil Screw Locknut	26.40
	X	X	P1030-4	Oil Sight Glass	10.90
	X	X	SM 250	Shims	33.10
	X			Labor, Oil & Paint; Repair or Ratio Changes, Net	596.00
		X		Labor, Oil & Paint; Repair or Ratio Changes, Nei	649.00

Gear Set Prices: Gear Sets Sold in Sets Only

Increasing Ratios

Model	1:1	10:11	5:6	4:5	3:4	2:3	4:7	1:2
250/300	1540.00	2450.00	1770.00	2650.00	2650.00	2450.00	2450.00	2800.00
350	1540.00	2450.00	1770.00	2650.00	2650.00	2450.00		

Decreasing Ratios

Model	11:10	6:5	5:4	4:3	3:2	8:5	7:4	2:1	5:2	3:1	9:4
250/300	2450.00	1830.00	1830.00	1830.00	1830.00	2810.00	2280.00	2030.00	1800.00	2110.00	2250.00
350	2450.00	1830.00	1830.00	1830.00	1830.00		2280.00	2030.00	1800.00	2110.00	2250.00

FOR HEAVY THRUST (SH) OR SPECIAL ROTATION PARTS, CONTACT FACTORY.
 MINIMUM ORDER VALUE - \$50.00 NET.
 ALWAYS PROVIDE SERIAL NUMBER OF DRIVE WHEN ORDERING PARTS.



Prices effective 2/1/2008. Subject to Change without Notice

Combination Part Prices

Ref No.	Description	20 & 30		40		60A		80A, 100A, & 125A	
		Part No.	Price	Part No.	Price	Part No.	Price	Part No.	Price
12	Thrust Bearing Carrier	S12S	306.00	J12S	424.00	P12SRC	364.00	P12S2	364.00
20	Thrust Bearing Bushing	Not Used		J20S	125.00	Not Used		Not Used	
21	Thrust Bearing Cover	S1121R	389.00	J2321	255.00	P21N	216.00	P21N	216.00
400	Vertical Shaft		425.00		446.00		483.00		483.00
600	Thrust Bearings	2-7407BG	309.00	2-7312BG	294.00	2-7312BG	294.00	2-7412BG	630.00
702	Drive Sleeve Locknut	N-07	4.00	2243	102.00	N-11	8.90	N-11	8.90
724	Sliding Clutch	1183	255.00	2248	285.00	3293	333.00	3293	333.00
736	Non-Reverse Pins, Set	NR C20	3.60	NR C40	4.80	NR C60	9.70	NR C80	9.70
756	Drive Sleeve	1212	255.00	2241	279.00	3290	321.00	3290	321.00
757	Drive Sleeve Cover	1213	306.00	2242	306.00	3291	366.00	3291	366.00
758	Bearing Bushing	1214	182.00	2244	194.00	3294	205.00	3294	205.00
769	Retaining Ring, Outer	3000-281	4.20	3000-334	6.80	3000-393	6.80	3000-393	6.80
770	Retaining Ring, Inner	3100-137	0.50	3100-177	0.70	3100-215	2.70	3100-215	2.70
792	Gib Key		2.80		4.70		2.80		2.80
6200Z	Steady Bearing	6207-2RS	35.10	6209-2RS	45.70	6211-2RS	69.20	6211-2RS	69.20

Ref No.	Description	150A		200A		250, 300, & 350	
		Part No.	Price	Part No.	Price	Part No.	Price
12	Thrust Bearing Carrier	P12C	393.00	M12SB	542.00		
20	Thrust Bearing Bushing	Not Used		Not Used		5643	459.00
21	Thrust Bearing Cover	P21NC	326.00	M21C	424.00	M21TC	455.00
400	Vertical Shaft		497.00		765.00		949.00
600	Thrust Bearings	2-7315BG	630.00	2-7415BG	1262.00		
702	Drive Sleeve Locknut	AN-14	14.50	AN-15	22.10	AN-16	26.40
724	Sliding Clutch	3468	439.00	5274	455.00	5647	665.00
736	Non-Reverse Pins, Set	NR C150A	9.70	NR C200	13.40	NR C250	13.40
756	Drive Sleeve	3689	603.00	5271	714.00	5644	714.00
757	Drive Sleeve Cover	3690	567.00	5272	799.00	5645	699.00
758	Bearing Bushing	3469	217.00	5273	242.00	5646	617.00
769	Retaining Ring, Outer	3000-433	7.60	3000-475	38.30	3000-500	10.30
770	Retaining Ring, Inner	3100-237	4.70	3100-275	7.40	5100-293	8.90
792	Gib Key		2.80		5.60		5.60
6200Z	Steady Bearing	6212-2RS	74.60	6214-2RS	99.40	6215-2RS	144.00

FOR HEAVY THRUST, SOLID SHAFT, AUTOMATIC COMBINATION
OR SPECIAL ROTATION PARTS, CONTACT FACTORY
MINIMUM ORDER VALUE - \$50.00 NET.
ALWAYS PROVIDE SERIAL NUMBER OF DRIVE WHEN ORDERING PARTS